



# *59<sup>th</sup> Annual Membership Meeting*

March 2021



**Raycine Franklin**

*Vice Chair*

**Becky Marshall**

*Secretary*

**John Keenan**

*Member*

**Donna Cook**

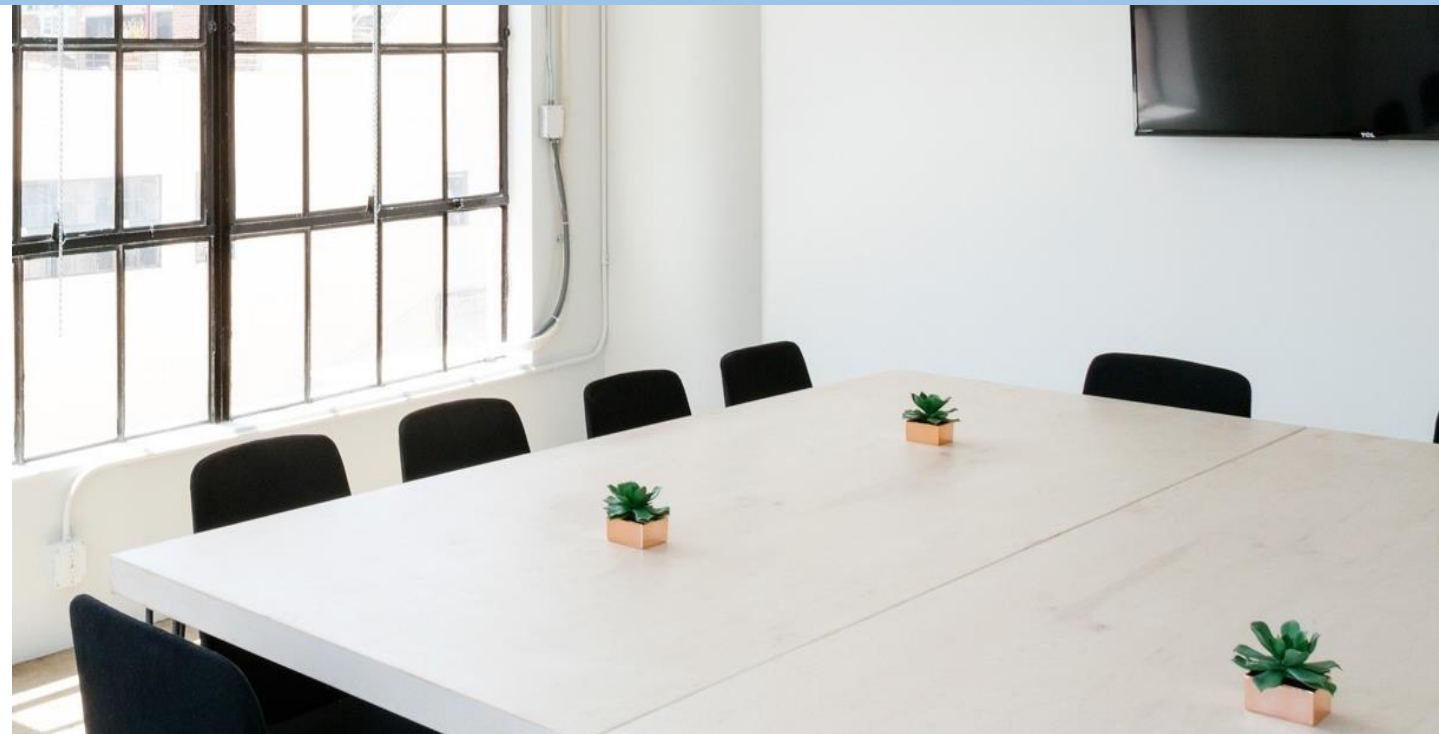
*Member*

**Jan Estrada**

*Member*



# Board of Directors





# Credit Union Staff

**John Curry**  
*Manager*

**Karen Lizana**  
*Assistant Manager*

**Freda Blaine**  
*Loan Officer*

**Lillian Gibson**  
*Loan Officer*



# Statement of Financial Condition

As of December 31<sup>st</sup>, 2020

## *Assets*

Loans to Members:	\$3,119,238
Cash on Hand:	\$1,014,544
Investments:	\$4,898,000
All Other:	\$74,396
<b>Total Assets:</b>	<b>\$9,106,178</b>

## *Liabilities*

Share Deposits:	\$6,912,856
Regular Reserve:	\$79,341
Undivided Earnings:	\$2,101,668
All Other:	\$12,313
<b>Total Liabilities:</b>	<b>\$9,106,178</b>







# *our story and mission*

## Our Story

Memorial Federal Credit Union opened its doors in February 1962 to provide financial services to the employees of Memorial Hospital and their family members. In the years since, we have grown our membership and continue to provide exceptional service.

## Our Mission

Memorial Federal Credit Union pledges to provide quality financial services responsive to the needs of its member owners. The credit union is committed to the philosophy of helping people in a caring professional atmosphere.



# Audit History

2020

*The supervisory committee is responsible for auditing the credit union each quarter. We also have a yearly supervisory audit done by an outside service. The NCUA (National Credit Union Association) our accrediting agency does an examination of the credit union every 12-18 months.*

## *Supervisory Committee:*

Pam Thomas– Chair

Ann Dronet

Christine Hayden



# Goals Completed

2020

- ✓ **Website Refresh**  
*Memorial FCU's website went through an overhaul in 2018, providing a better online experience.*
- ✓ **New Rates**  
*Memorial FCU changed loan rates across the board to remain competitive. These loan rates are available year round. We also set dividends on your savings and share certificates higher than our competitors.*
- ✓ **Electronic Funds Transfer (ACH)**

**Completed**

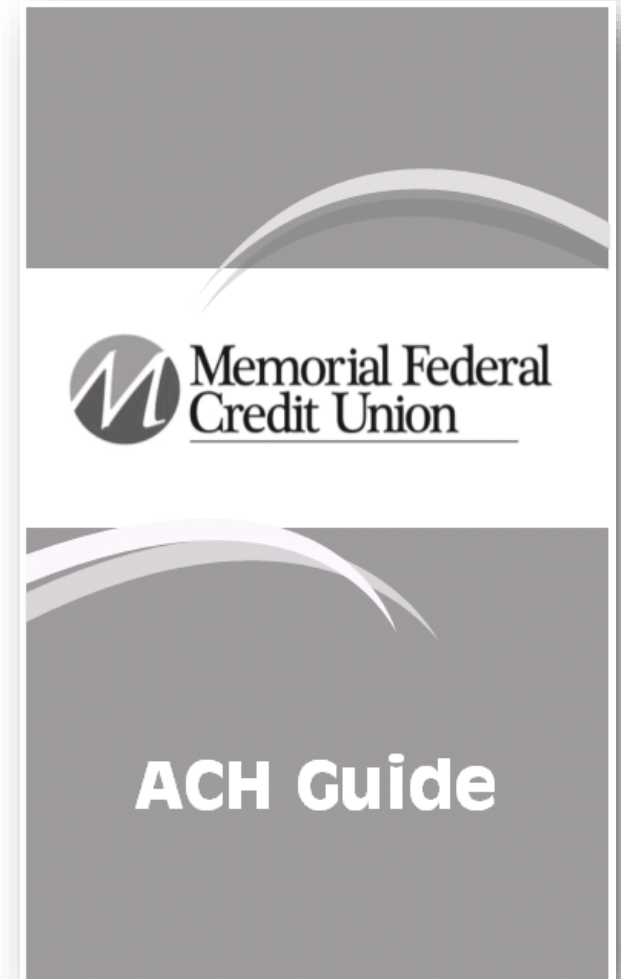


# Electronic Transfers

## ACH

Memorial FCU is now a member of the Automatic Clearing House (ACH) network as a receiving institution. This means we can receive requests through the ACH network to credit or debit your account.

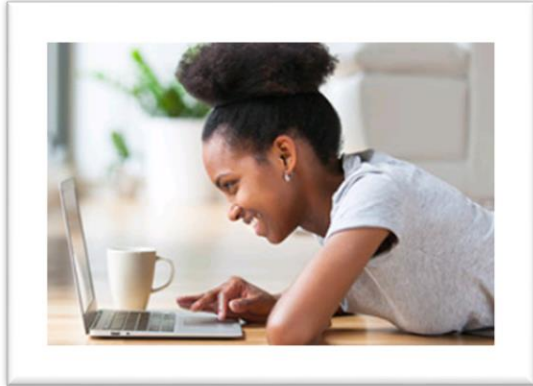
Make sure to pick up your copy of the ACH Guide for helpful tips to take advantage of this new service!





# Initiatives

2021



Innovative solutions to bring more electronic services online



Privacy:  
freedom from  
unauthorized intrusion



Your voice matters at Memorial FCU! Let us know of any services or improvements you'd like to see.



# *BOD Nominations*

2020-2021




**Becky Marshall, John Keenan and Wayne Laubmeier were nominated** to serve additional terms of 3 years as Board of Directors members. Mrs. Marshall, Mr. Keenan and Mr. Laubmeier have agreed to serve, if elected.



Cash

Prizes





On behalf of the Board of Directors and the Memorial FCU team, we express our sincere appreciation to YOU, our members, for choosing Memorial FCU for your financial services. We look forward to serving you and your families for years to come.



4500 13<sup>th</sup> Street  
PO Box 1810  
Gulfport, MS 39502

(Phone): 865.3142  
(Fax): 865.3026  
service@memorialfcu.org

<https://memorialfcu.org>